



ESSENTIALS Elements

EBARA TECHNOLOGIES, INC.

News & Views • July 2023

Ebara Technologies Inc exhibiting at SEMICON West



Join us at Booth #1341 to view our latest exhaust management solutions on display on July 11-13 at Moscone Center, San Francisco, CA.

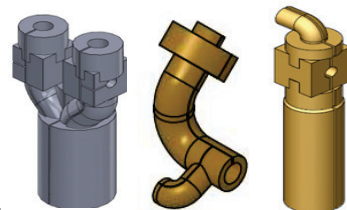
Ebara will have global representatives from the EBARA Precision Machinery Company.

Reach out to schedule a meeting with either Components or Systems Equipment Division representatives.



Ebara Global Challenge Award Contest - On Tool OEM Heaters

Ebara Technologies Inc. recently received recognition from our parent company, Ebara Corporation, during an Ebara Global Challenge Award contest. This contest highlighted progressive projects that bring product improvements and new benefits to Ebara customers. Ebara Technologies presented the On-Tool heater products, which is an initiative for contact heating on OEM tool sets.



OEM Heaters

The On-Tool heaters are heating “jackets” that consist of a carefully designed heating element layout with added thermal insulation and facing. These heaters allow for product performance improvements with cost reduction, which can be appreciated by the customer through uniform, consistent heating.

The built-in PID controllers ramp the heaters to line temperatures allowing full control, while staying mindful of energy usage. These heaters can be custom designed for line diameters from ¼” OD up to and beyond 8” OD, with standard temperatures ranging from 50 ~ 220 C. Let us help improve your OEM applications with uniform, reliable heating to keep your process running smoothly.



ESSENTIALS Elements

EBARA TECHNOLOGIES, INC.

News & Views • July 2023

Next Generation Dry Pumps

The next generation of EBARA's proven high reliability roots design dry pump reduces power consumption further, resulting in lower Scope 2 carbon emissions.



Model EV-X

Enhanced temperature profile control features multi-configurations and corrosion resistant materials allows the EV-X to be utilized as the single pump model of choice for applications such as Etch, Ash, Implant, and CVD. The optimized pump packaging achieves the smallest footprint available and sets the standard in pump 300, 700, and 1000 CFM classes. It's compact frame and facilities provide an easy retrofit of older pump models. For new installations, Ebara recommends integrating with the Modular Pumping Systems (MPS) for a cost effective solution to support new tool platforms.

Reducing Carbon Emissions

Semiconductor device manufacturing companies are moving forward with their decarbonization plans and focusing on reducing Scope 1 emissions. A major source of emissions come from the process using Perfluorocarbons (PFC's) in the etch process and CVD chamber cleans. EBARA is a leader in Green House Gas Abatement with a full line of combustion-wash abatement and dry capture technologies.



Model G5

To minimize the carbon output from fuel sources, Ebara is introducing a new hydrogen combustion burner. The hydrogen burner provides high destruction rate efficiencies of the PFC's but does not contribute to carbon dioxide emissions as the combustion byproduct is water vapor, H2O. The hydrogen burner can be upgraded to existing G5's or ordered as a new option. Contact EBARA to learn more on how we can help reduce your carbon emissions.



EBARA Technologies, Inc.
Service and Sales presence:

Headquarters
51 Main Avenue
Sacramento, CA 95838

San Jose, CA Albany, NY
Malta, NY Hillsboro, OR
Newburyport, MA Boise, ID
Phoenix, AZ

JOIN US AT OUR
UPCOMING EVENTS

SEMICON[®]WEST
BEYOND SMART

SEMICON WEST - July 11-13
San Francisco, CA

We look forward to see
you at SEMICON West!
For a FREE Expo Pass contact
info@ebaratech.com



Ebara closed on July 3rd
& 4th for Holidays



www.ebaratech.com
1.800.535.5376
info@ebaratech.com